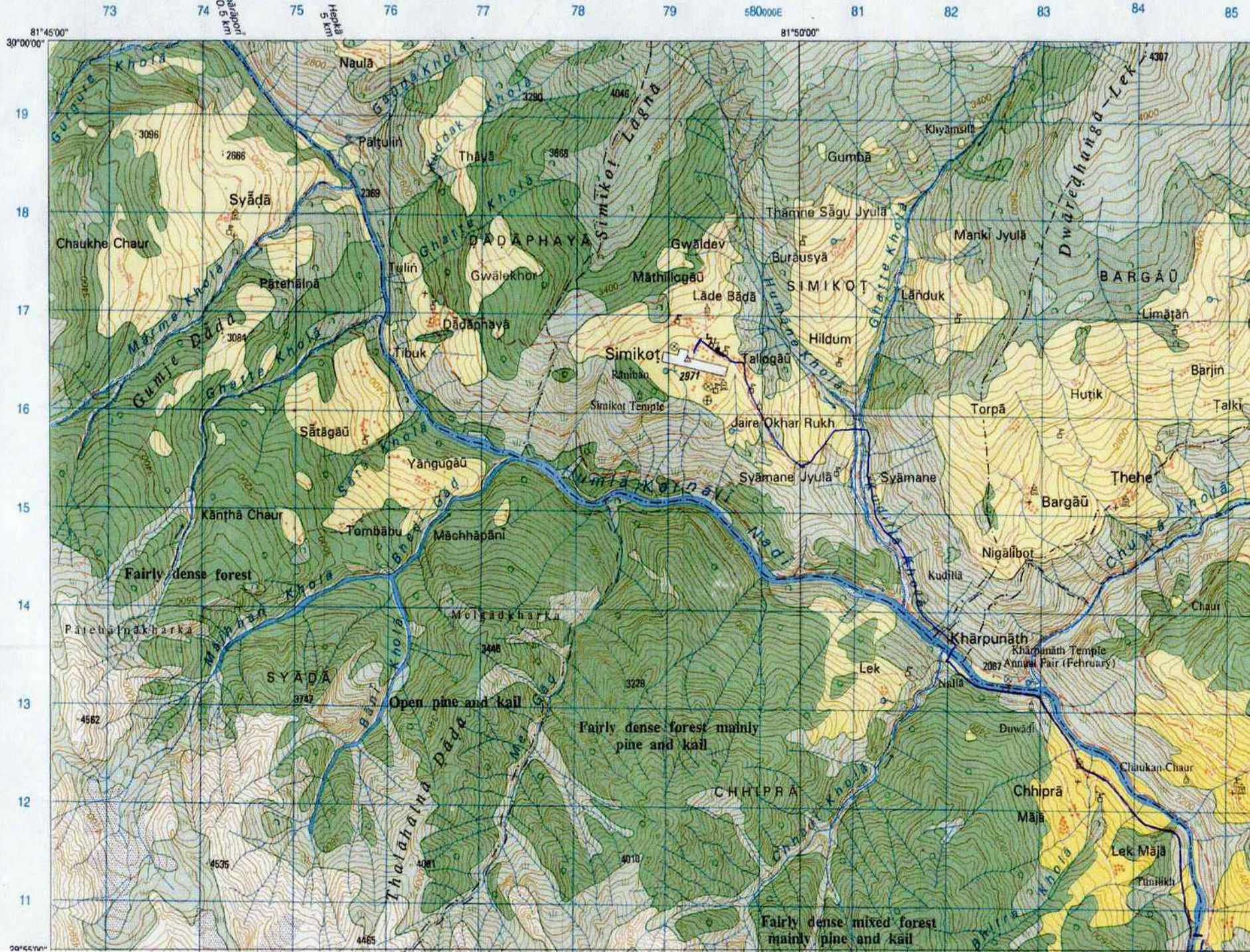


A - NW - 2981 04 Simikot



29°55'00"  
3310000N  
09  
08  
07  
06  
05  
05  
04  
03  
02  
29°50'00"  
01



Fairly dense mixed forest  
mainly pine and kail

Fairly dense mixed forest mainly kail

Open mixed forest

Udgyane Lek

Dhajia Laina Lek

Karanga Lek

Lama Chaur Lek

BICHCHHYA

KARANGA

Balekharka

Syala Bada

Dolik

Dolikkharka

Bokche Gauda

Piüs

Masedi

Bhiupi

Lali

Deukt

Thali

Bukeni

Siniyan Jyula

Dhulapokharka

Bamankharka

Chyechaur  
1.5 km



29°55'00" D - WW - 2981 03 Chyachaur

310000N

09

08

07

06

05

04

03

02

29°50'00"

01

4564

Sumjomkharka

4794

Maryonki

Tilinkharka

3862

Nunekhara Glacier

3746

3609

3632

Ranikharka

4100

Tharagikharka

3505

Fairly dense mixed forest

Thothorekharka

3498

Yulpu Lek

4775

4966

5099

4962

Nunekhara Lek

5482

5428

5144

4806

4048

4770

5645

5420

4810

4968

5075

5392

Bikekharka

Barwomunga

Simitha Kharka

Darabapcine Kharka



D - NW - 2981 03 Chyachaur



D - NE - 2981 03 Chyachaur

59

1.5 km  
Chyachaur  
60000E

61

62

63

64

65

66

67

68

69

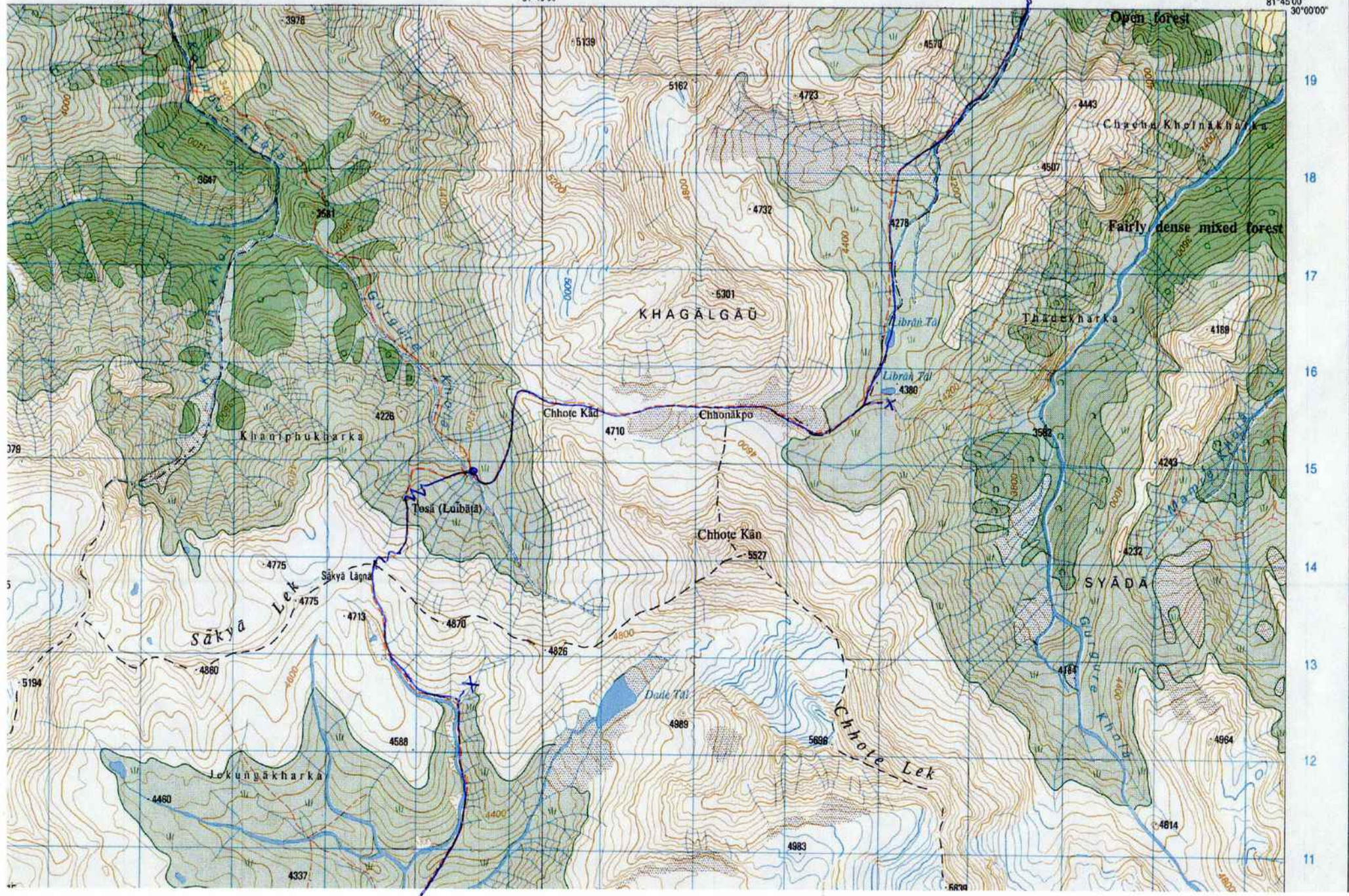
Chyachaur  
3 km  
70000E

71

72

81°40'00"

81°45'00"  
30°00'00"



19

18

17

16

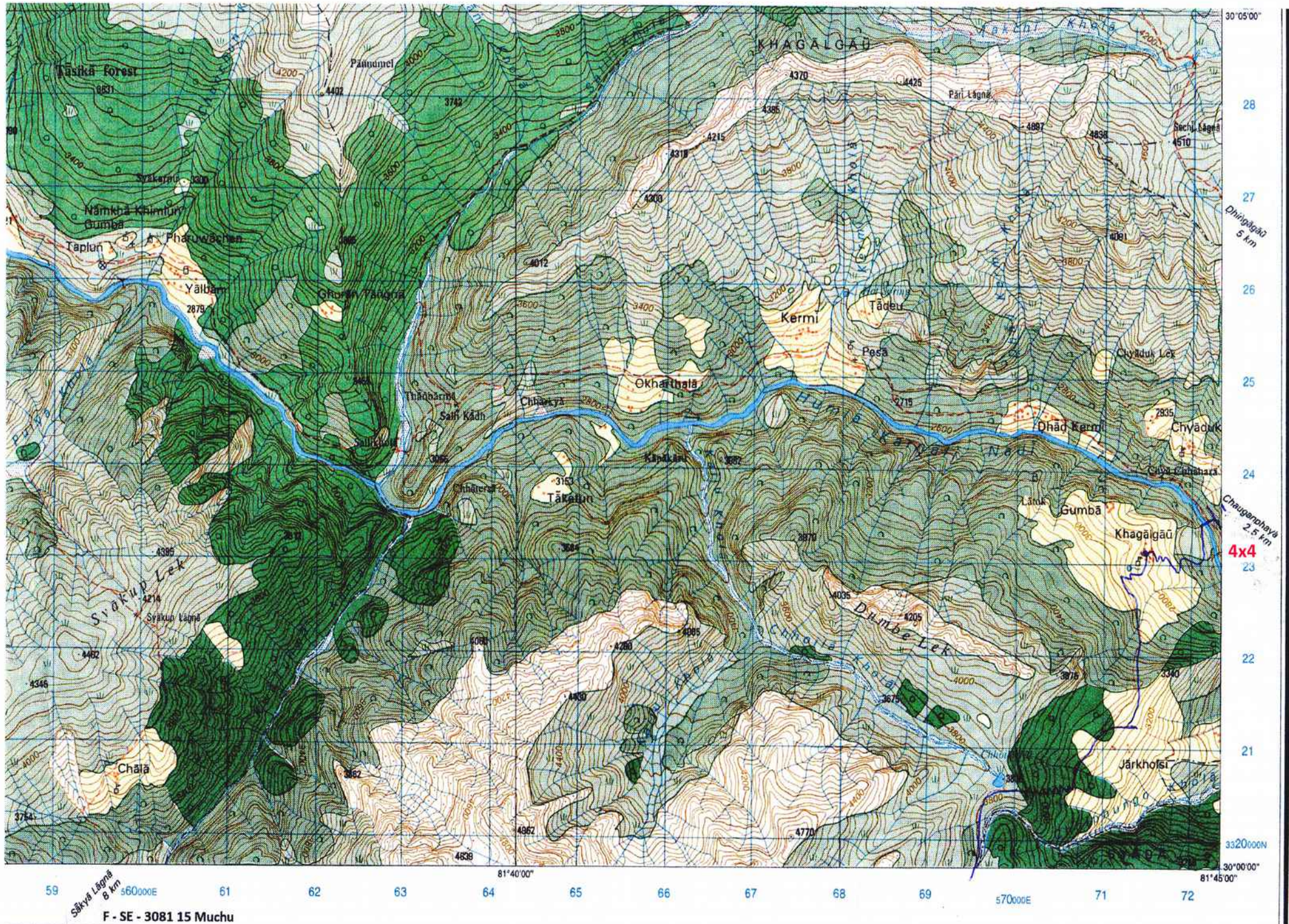
15

14

13

12

11



59 60 61 62 63 64 65 66 67 68 69 70 71 72

Sākun Lāgnā  
8 km

F - SE - 3081 15 Muchu

30°05'00"  
28  
27  
26  
25  
24  
23  
22  
21  
3320000N  
30°00'00"

Dhripāgāi  
5 km

Chauganphaya  
2.5 km  
4x4

81°40'00"  
81°45'00"

570000E

3320000N